

Al-La (Aluminum-Lanthanum)

H. Okamoto

The Al-La phase diagram in [Massalski2] was updated by [2000Oka] based on the work of [1988Gsc] and [1996Sac]. [2001Cac] calculated the Al-La phase diagram by thermodynamic modeling. Figure 1 shows the Al-La phase diagram calculated by [2006Zho]. Because this diagram is based on newer experimental phase boundary data and thermodynamic data, it is expected to be a better presentation of the true equilibria.

References

1988Gsc: K.A. Gschneidner, Jr. and F.W. Calderwood, The Al-La (Aluminum-Lanthanum) System, *Bull. Alloy Phase Diagrams*, 1988, **9**(6), p 686-689

1996Sac: A. Saccone, A.M. Cardinale, S. Delfino, and R. Ferro, Phase Equilibria in the Rare Earth Metals (R)-Rich Regions of the R-Al Systems (R = La, Ce, Pr, Nd), *Z. Metallkd.*, 1996, **87**(2), p 82-87

2000Oka: H. Okamoto, Al-La (Aluminum-Lanthanum), *J. Phase Equilibria*, 2000, **21**(2), p 205

2001Cac: G. Cacciamani and R. Ferro, Thermodynamic Modeling of Some Aluminum-Rare Earth Binary Systems: Al-La, Al-Ce and Al-Nd, *CALPHAD*, 2001, **25**(4), p 583-597

2006Zho: S.H. Zhou and R.E. Napolitano, Phase Equilibria and Thermodynamic Limits for Partitionless Crystallization in the Al-La Binary System, *Acta Mater.*, 2006, **54**, p 831-840

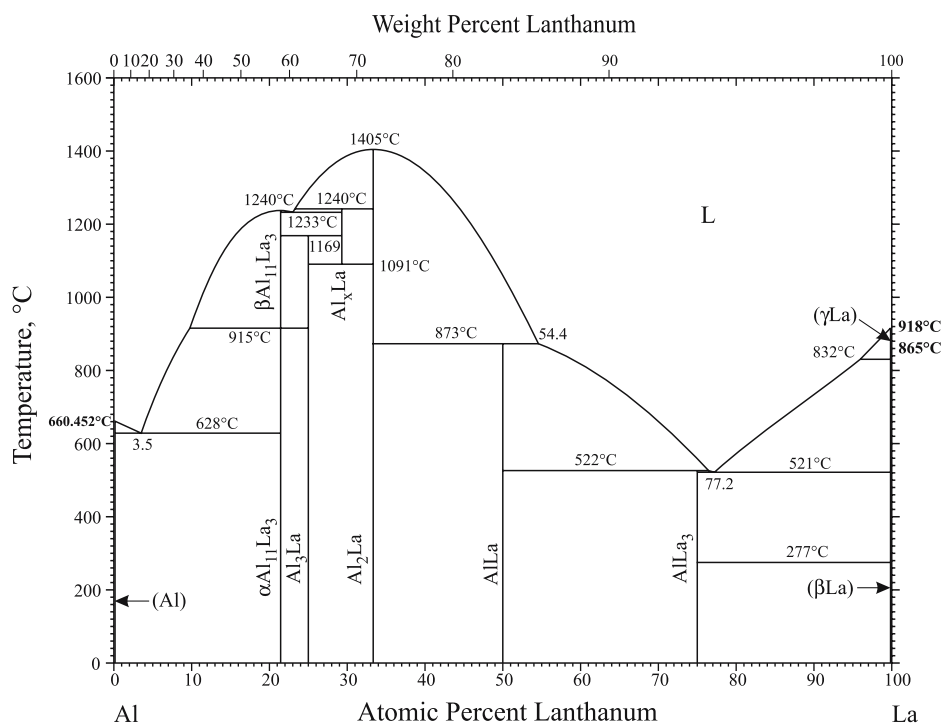


Fig. 1 Al-La phase diagram